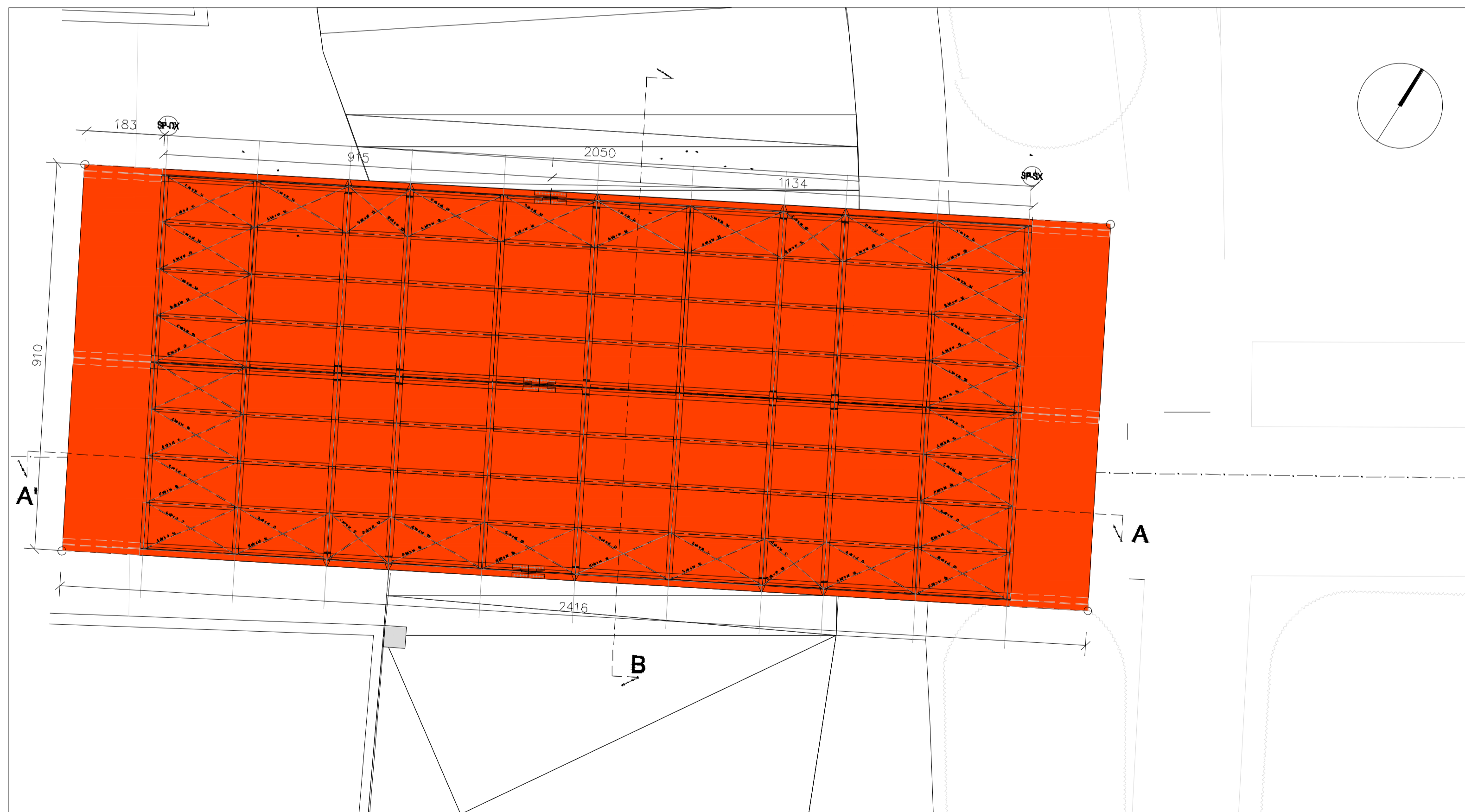
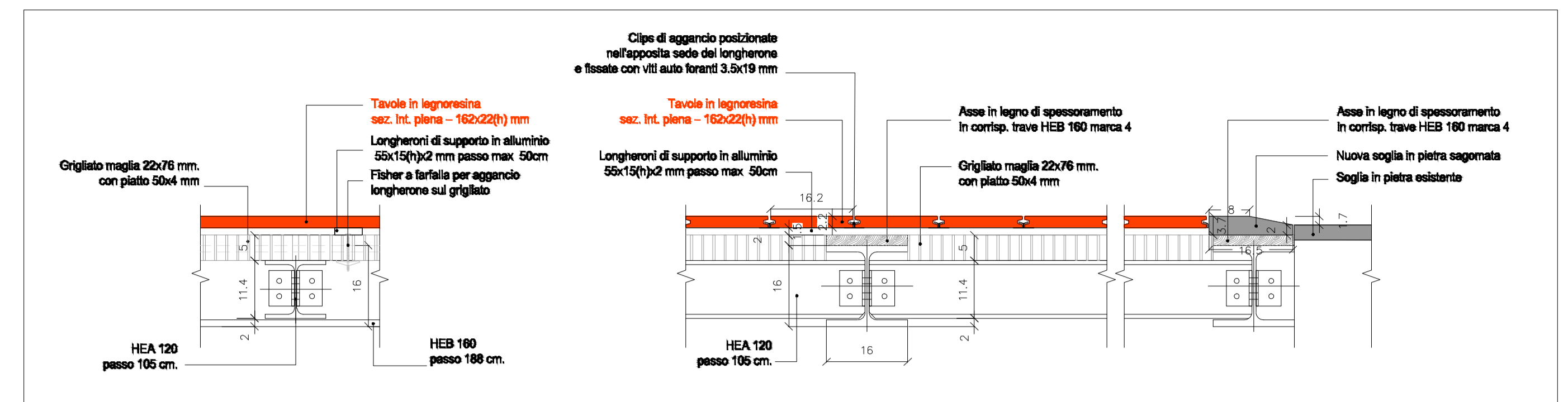


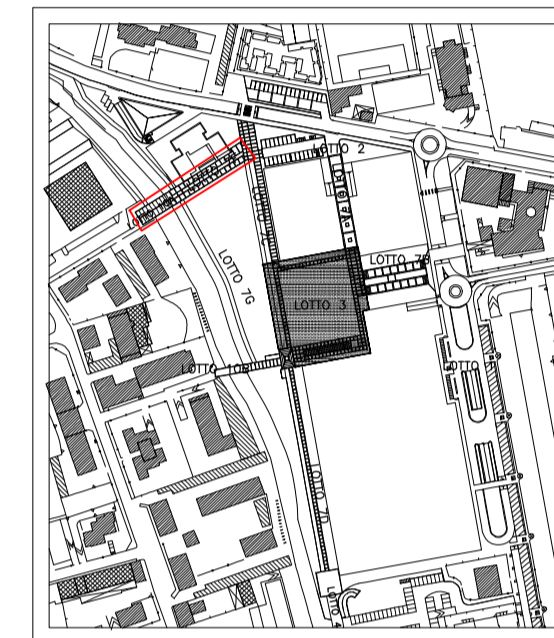
SEZIONE TRASVERSALE scala 1:20



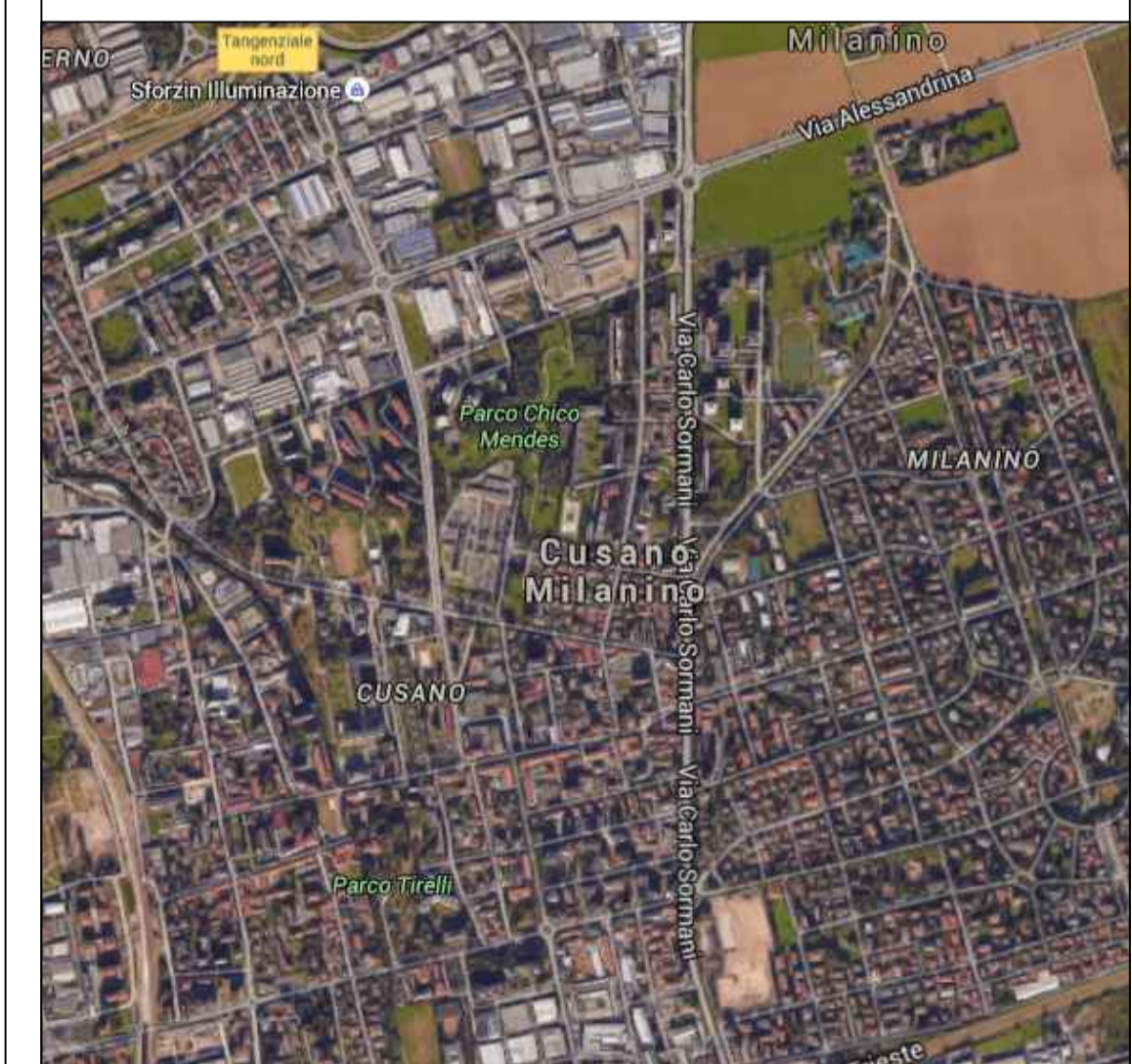
PLANIMETRIA scala 1:100



PARTICOLARI



RIVALUTAZIONE AREE VERDI E SPAZI PUBBLICI ANNO 2015
PROGETTO DEFINITIVO/ESECUTIVO



I Progettisti:
 arch. F. Fiorenza
 geom. Pamela Toso
 opere a verde
 dott.ssa M. Colombo

Il Responsabile del Procedimento:
 dott. Marco Iachellini

Elaborato N°: **03**

SCALA: VARIE | PLANIMETRIA E SEZIONI | Data: NOVEMBRE 2015 | REV.: