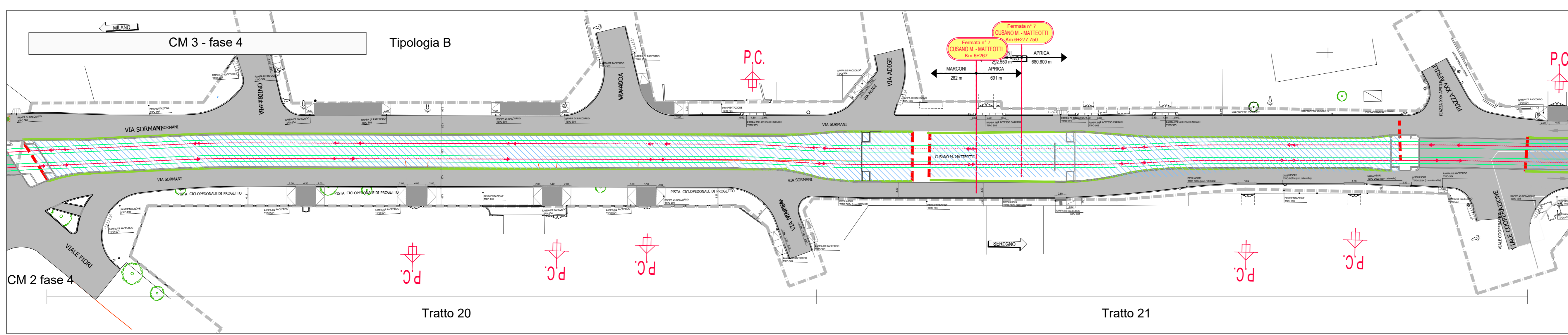
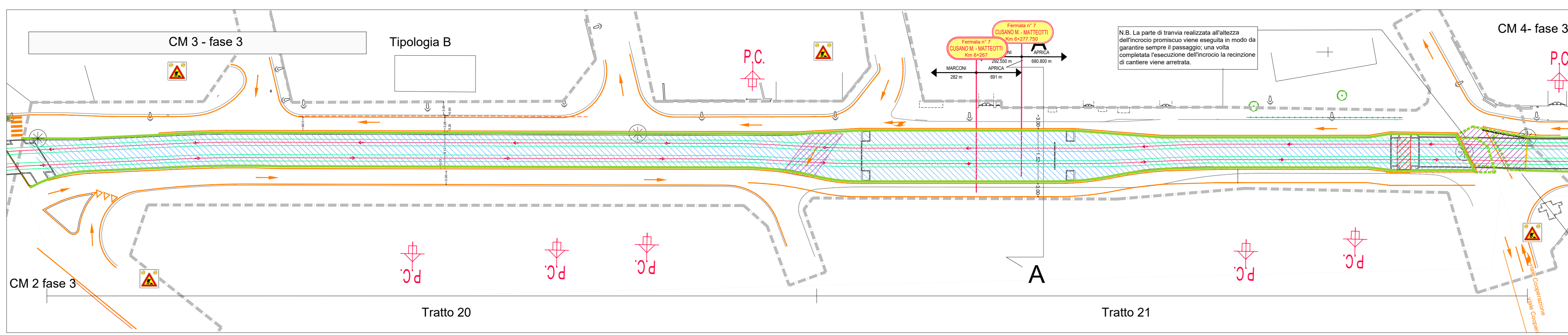
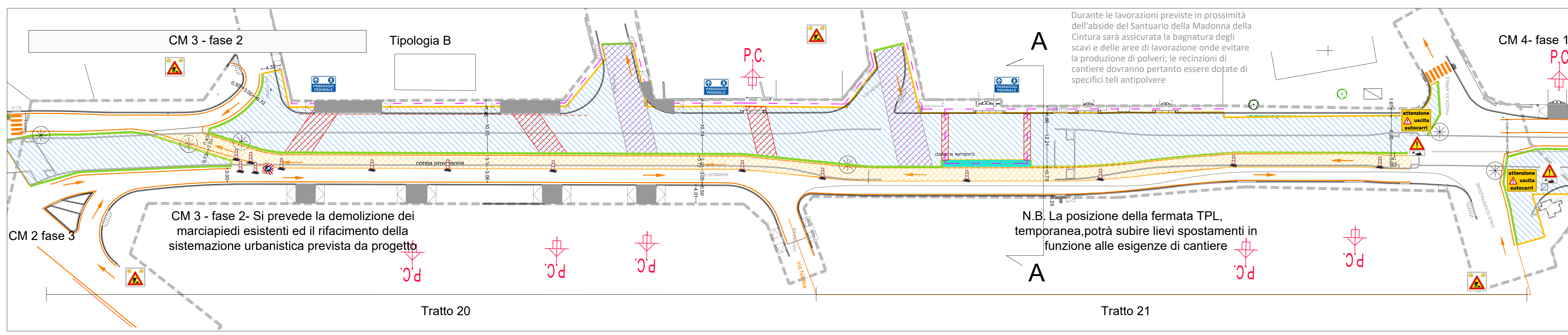
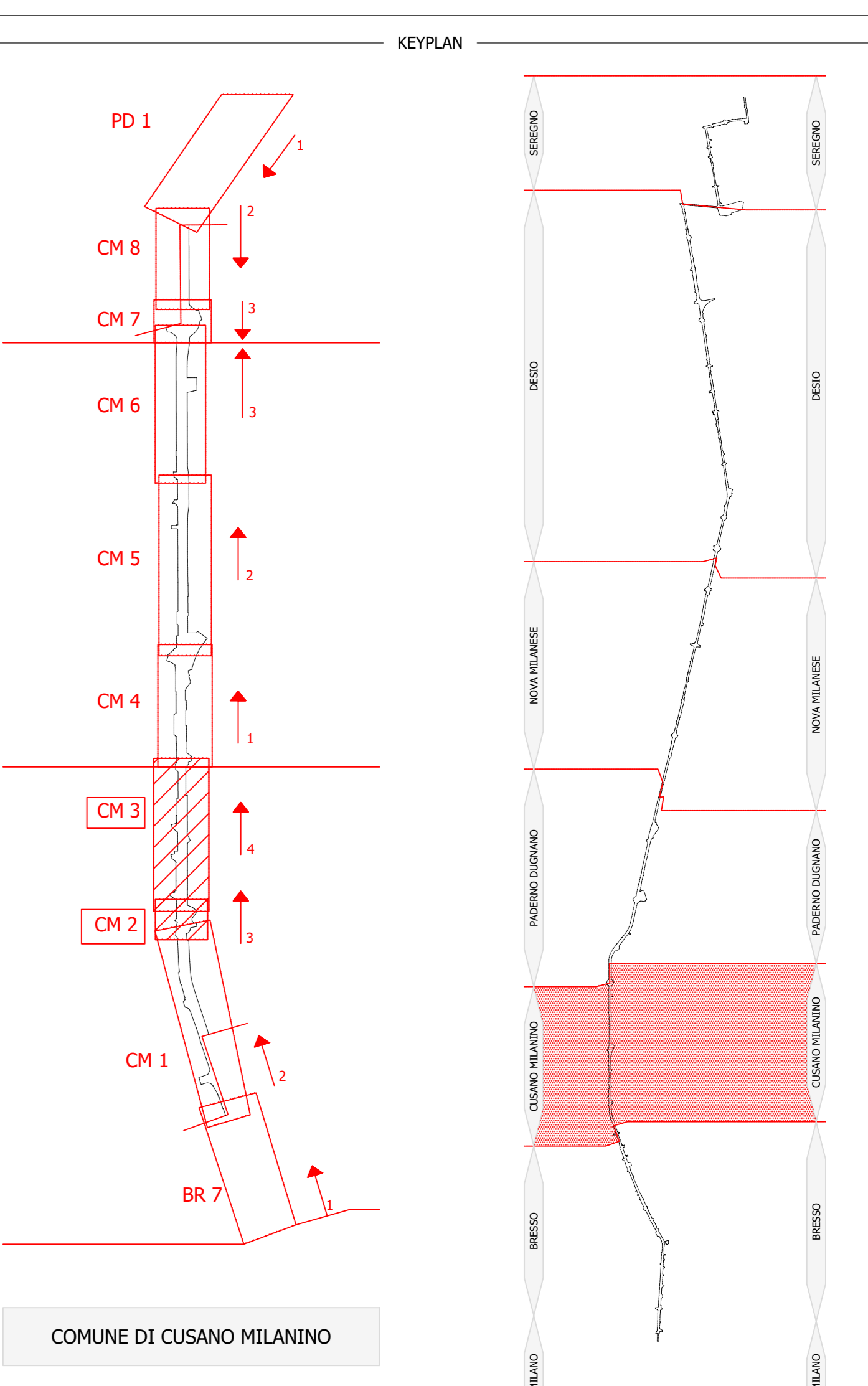
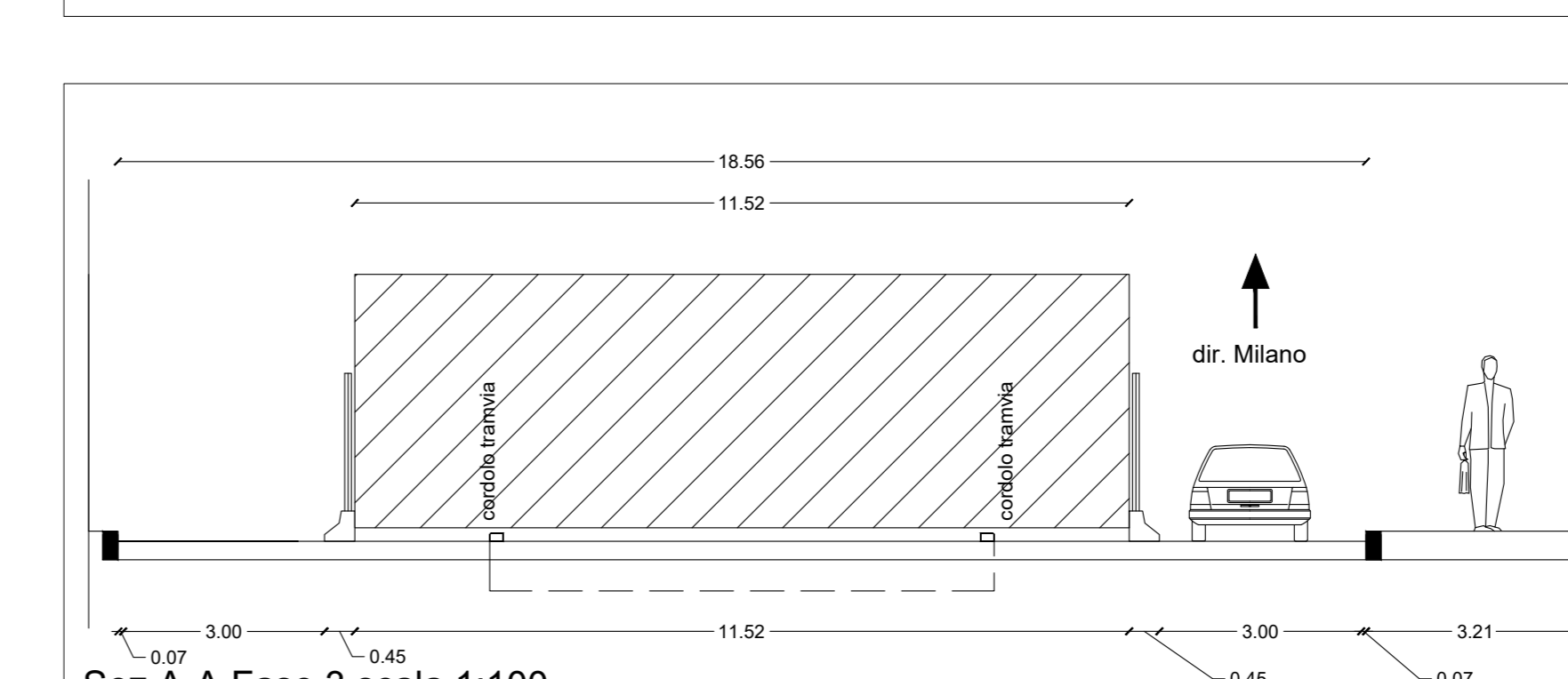
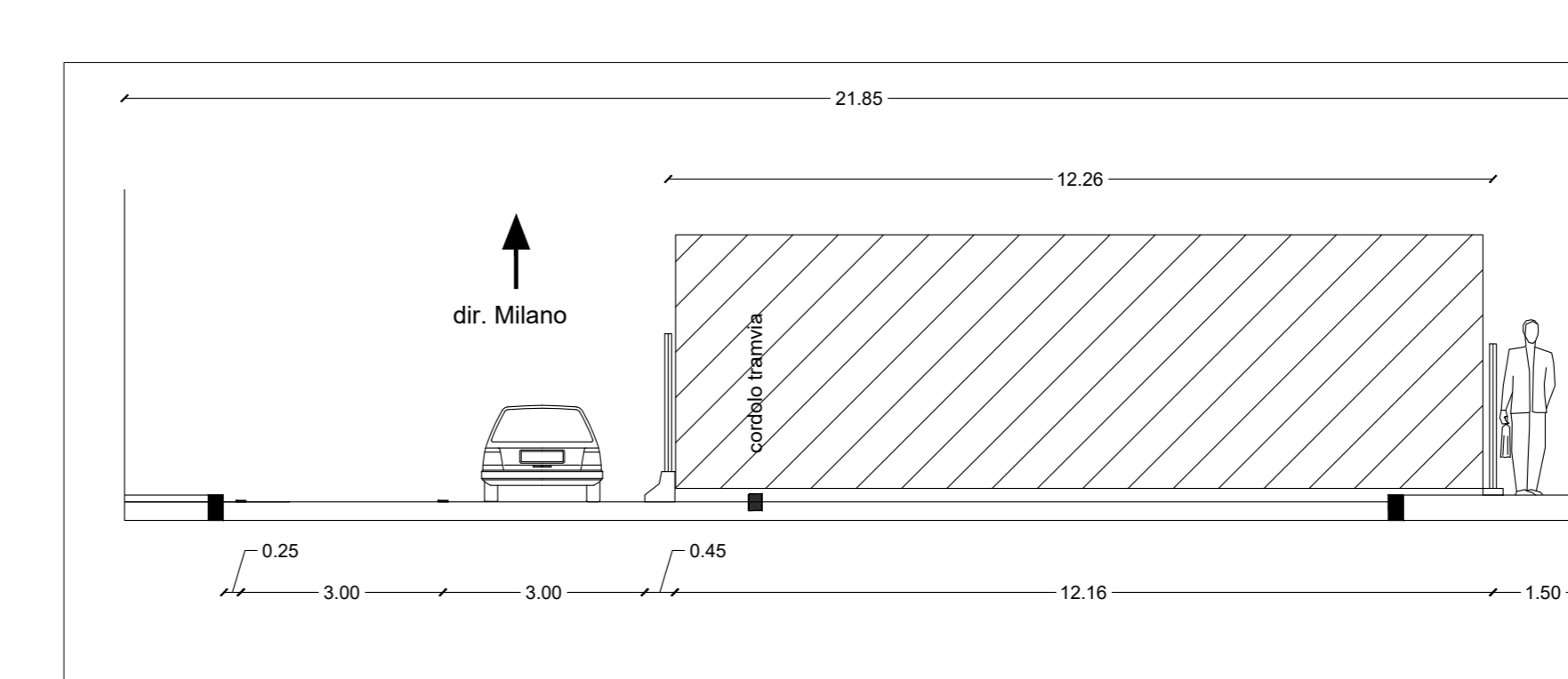
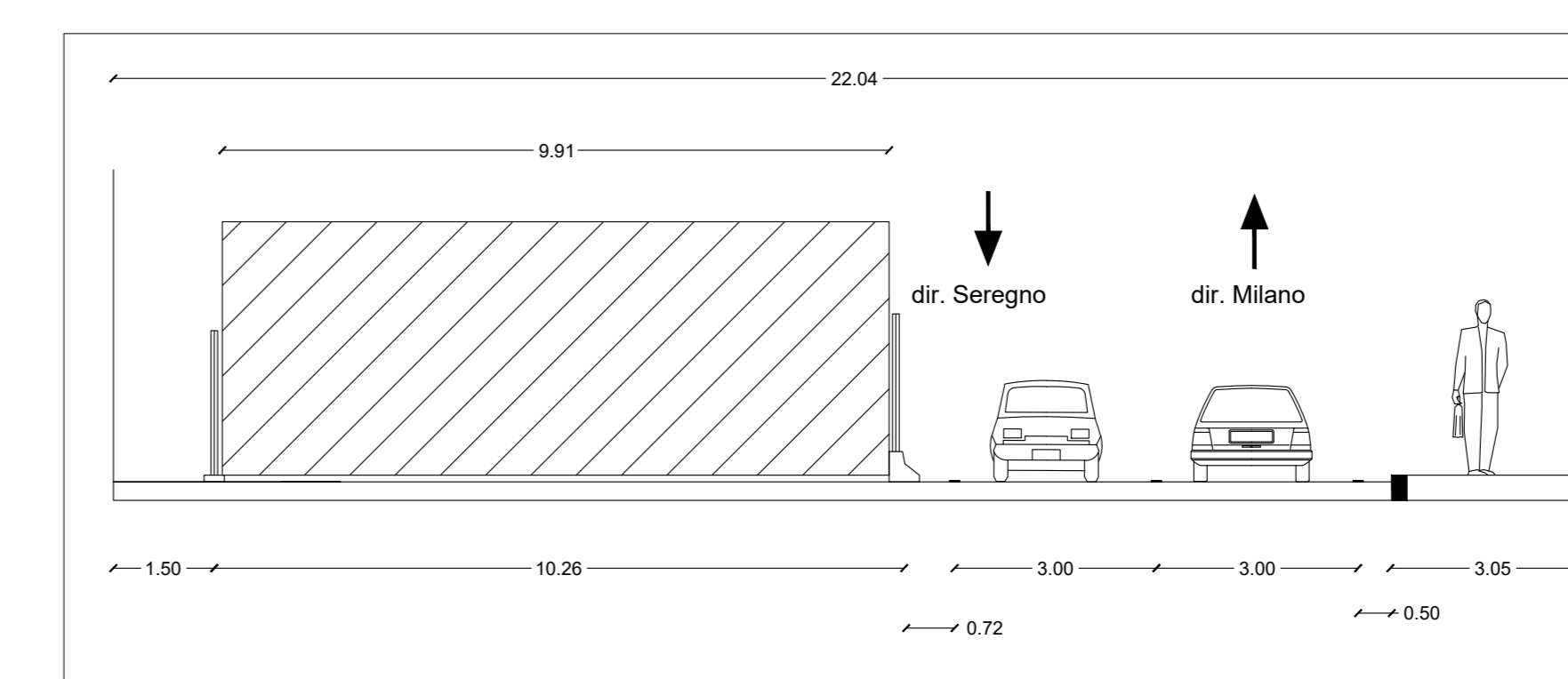
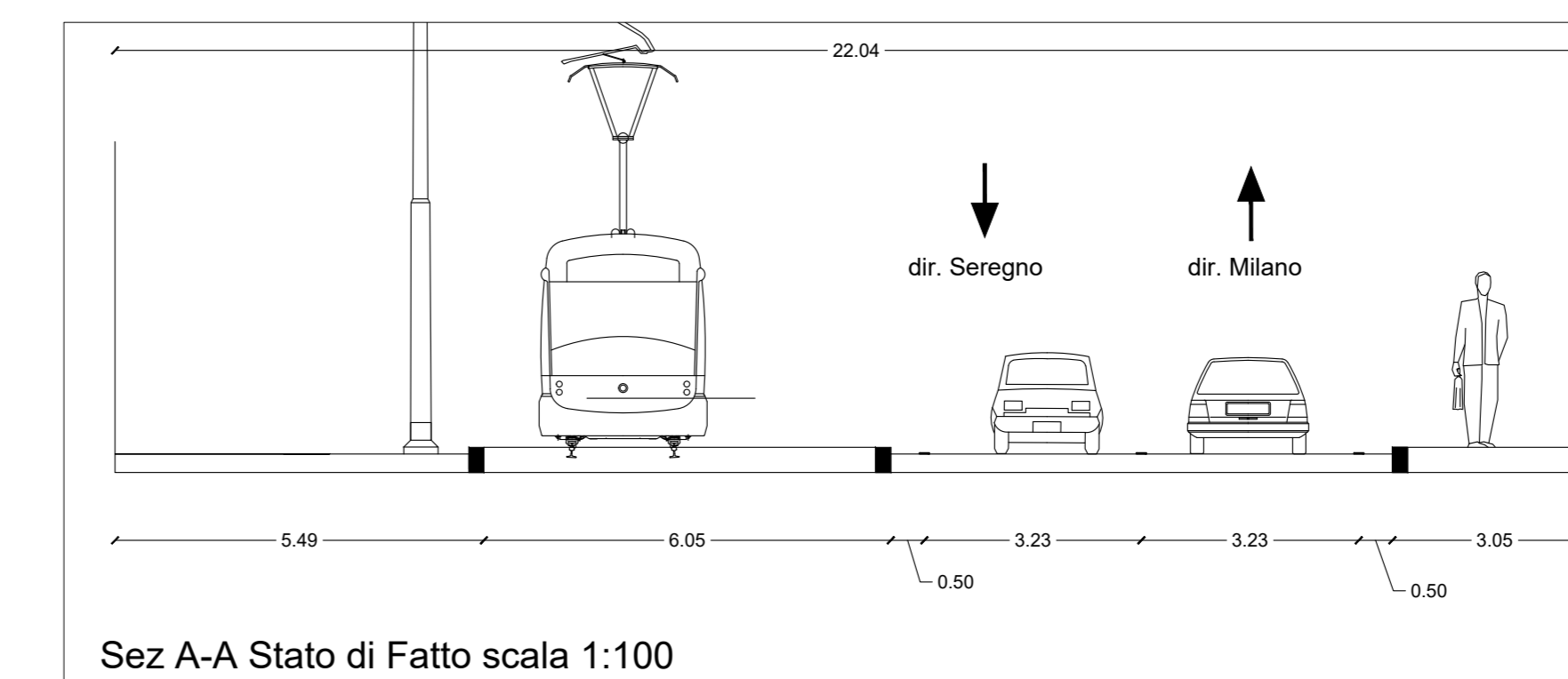
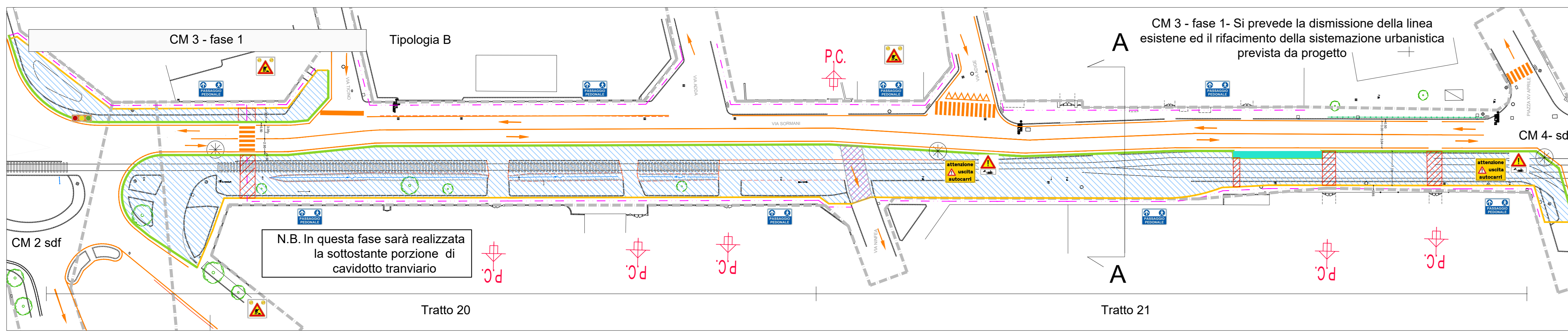


LEGENDA

Perimetro di cantiere	Passaggio pedonale
Varco di cantiere	Area di cantiere
Accessi ai passi carrabili	Accesso subordinato all'avanzamento del cantiere - nota 1
Viabilità ordinaria in fase di cantiere	Viabilità con limitazioni di circolazione subordinata all'avanzamento del cantiere - nota 2
New-Jersey	Sedime transitorio temporaneamente adibito a corsia stradale provvisoria
Fermata provvisoria TPL - m 20.0x1.50	
Recinzioni	
Tipo A - Recinzione pesante	
Tipo B - Recinzione leggera	

Note:
 1. Gli innesti con la viabilità interferente vengono sempre garantiti mediante il posizionamento di opere provvisorie (recinzioni mobili, passerelle, ecc) in modo tale da garantire sempre l'accesso dalla viabilità principale verso le traversine o viceversa al mezzo in transito.
 2. L'ingressibilità ai mezzi privati sarà sempre garantita a meno di particolari casi (veicoli di dimensioni ridotte) ed in periodi in cui questo andrà concordato con l'impresa. Gli accessi carrabili alle proprietà private verranno mantenuti durante tutte le fasi di lavoro mediante appositi corridoi delimitati con la stessa recinzione utilizzata per il cantiere.
 3. Per le tipologie di recinzioni e delle relative sistemazioni si rimanda ai seguenti schemi tipologie:
 • E_T_0_00_C_IG0_DT_PL_01_C
 • E_T_0_00_C_IG0_DT_PL_02_C
 • E_T_0_00_C_IG0_DT_PL_03_C
 • E_T_0_00_C_IG0_DT_PL_04_C
 • E_T_0_00_C_IG0_DT_PL_05_C
 • E_T_0_00_C_IG0_DT_PL_06_A
 • E_T_0_00_C_IG0_DT_PL_07_C
 • E_T_0_00_C_IG0_DT_PL_08_C
 • E_T_0_00_C_IG0_DT_PL_09_C
 • E_T_0_00_C_IG0_DT_PL_10_C
 • E_T_0_00_C_IG0_DT_PL_11_C
 • E_T_0_00_C_IG0_DT_PL_12_C
 • E_T_0_00_C_IG0_DT_PL_13_C
 • E_T_0_00_C_IG0_DT_PL_14_C
 • E_T_0_00_C_IG0_DT_PL_15_C
 • E_T_0_00_C_IG0_DT_PL_16_C
 • E_T_0_00_C_IG0_DT_PL_17_C
 • E_T_0_00_C_IG0_DT_PL_18_C
 • E_T_0_00_C_IG0_DT_PL_19_C
 • E_T_0_00_C_IG0_DT_PL_20_C
 • E_T_0_00_C_IG0_DT_PL_21_C
 • E_T_0_00_C_IG0_DT_PL_22_C
 • E_T_0_00_C_IG0_DT_PL_23_C
 • E_T_0_00_C_IG0_DT_PL_24_C
 • E_T_0_00_C_IG0_DT_PL_25_C
 • E_T_0_00_C_IG0_DT_PL_26_C
 • E_T_0_00_C_IG0_DT_PL_27_C
 • E_T_0_00_C_IG0_DT_PL_28_C
 • E_T_0_00_C_IG0_DT_PL_29_C
 • E_T_0_00_C_IG0_DT_PL_30_C
 • E_T_0_00_C_IG0_DT_PL_31_C
 • E_T_0_00_C_IG0_DT_PL_32_C
 • E_T_0_00_C_IG0_DT_PL_33_C
 • E_T_0_00_C_IG0_DT_PL_34_C
 • E_T_0_00_C_IG0_DT_PL_35_C
 • E_T_0_00_C_IG0_DT_PL_36_C
 • E_T_0_00_C_IG0_DT_PL_37_C
 • E_T_0_00_C_IG0_DT_PL_38_C
 • E_T_0_00_C_IG0_DT_PL_39_C
 • E_T_0_00_C_IG0_DT_PL_40_C
 • E_T_0_00_C_IG0_DT_PL_41_C
 • E_T_0_00_C_IG0_DT_PL_42_C
 • E_T_0_00_C_IG0_DT_PL_43_C
 • E_T_0_00_C_IG0_DT_PL_44_C
 • E_T_0_00_C_IG0_DT_PL_45_C
 • E_T_0_00_C_IG0_DT_PL_46_C
 • E_T_0_00_C_IG0_DT_PL_47_C
 • E_T_0_00_C_IG0_DT_PL_48_C
 • E_T_0_00_C_IG0_DT_PL_49_C
 • E_T_0_00_C_IG0_DT_PL_50_C
 • E_T_0_00_C_IG0_DT_PL_51_C
 • E_T_0_00_C_IG0_DT_PL_52_C
 • E_T_0_00_C_IG0_DT_PL_53_C
 • E_T_0_00_C_IG0_DT_PL_54_C
 • E_T_0_00_C_IG0_DT_PL_55_C
 • E_T_0_00_C_IG0_DT_PL_56_C
 • E_T_0_00_C_IG0_DT_PL_57_C
 • E_T_0_00_C_IG0_DT_PL_58_C
 • E_T_0_00_C_IG0_DT_PL_59_C
 • E_T_0_00_C_IG0_DT_PL_60_C
 • E_T_0_00_C_IG0_DT_PL_61_C
 • E_T_0_00_C_IG0_DT_PL_62_C
 • E_T_0_00_C_IG0_DT_PL_63_C
 • E_T_0_00_C_IG0_DT_PL_64_C
 • E_T_0_00_C_IG0_DT_PL_65_C
 • E_T_0_00_C_IG0_DT_PL_66_C
 • E_T_0_00_C_IG0_DT_PL_67_C
 • E_T_0_00_C_IG0_DT_PL_68_C
 • E_T_0_00_C_IG0_DT_PL_69_C
 • E_T_0_00_C_IG0_DT_PL_70_C
 • E_T_0_00_C_IG0_DT_PL_71_C
 • E_T_0_00_C_IG0_DT_PL_72_C
 • E_T_0_00_C_IG0_DT_PL_73_C
 • E_T_0_00_C_IG0_DT_PL_74_C
 • E_T_0_00_C_IG0_DT_PL_75_C
 • E_T_0_00_C_IG0_DT_PL_76_C
 • E_T_0_00_C_IG0_DT_PL_77_C
 • E_T_0_00_C_IG0_DT_PL_78_C
 • E_T_0_00_C_IG0_DT_PL_79_C
 • E_T_0_00_C_IG0_DT_PL_80_C
 • E_T_0_00_C_IG0_DT_PL_81_C
 • E_T_0_00_C_IG0_DT_PL_82_C
 • E_T_0_00_C_IG0_DT_PL_83_C
 • E_T_0_00_C_IG0_DT_PL_84_C
 • E_T_0_00_C_IG0_DT_PL_85_C
 • E_T_0_00_C_IG0_DT_PL_86_C
 • E_T_0_00_C_IG0_DT_PL_87_C
 • E_T_0_00_C_IG0_DT_PL_88_C
 • E_T_0_00_C_IG0_DT_PL_89_C
 • E_T_0_00_C_IG0_DT_PL_90_C
 • E_T_0_00_C_IG0_DT_PL_91_C
 • E_T_0_00_C_IG0_DT_PL_92_C
 • E_T_0_00_C_IG0_DT_PL_93_C
 • E_T_0_00_C_IG0_DT_PL_94_C
 • E_T_0_00_C_IG0_DT_PL_95_C
 • E_T_0_00_C_IG0_DT_PL_96_C
 • E_T_0_00_C_IG0_DT_PL_97_C
 • E_T_0_00_C_IG0_DT_PL_98_C
 • E_T_0_00_C_IG0_DT_PL_99_C
 • E_T_0_00_C_IG0_DT_PL_100_C

Elaborati di riferimento
 E_T_1_CM_C_IG0_PL_PL_01
 E_T_1_CM_L_VI0_VI_PL_01
 E_E_1_21_A_IPF_CA_PL_01



Milano
 Ministero delle Infrastrutture e dei Trasporti
 Preveditorato Interregionale alle OO.PP. per la Lombardia e l'Emilia Romagna
METROTRANVIA MILANO PARCO NORD - SEREGNO
 CODICE C.U.P. M230300040009
 CODICE C.I.G. 142000117A
PROGETTO ESECUTIVO

**CANTIERIZZAZIONE
 INQUADRAMENTO GENERALE
 ELABORATI DI DETTAGLIO
 Planimetria di dettaglio cantiere CM 2 e CM3
 (tratti da 6+001 a 6+387)**



APPALTAZIONE
C.M.C.
 RESPONSABILE DELLA INTEGRAZIONE DELLE PRESTAZIONI SPECIALISTICHE
ALSTOM
 RESPONSABILE DELLA INTEGRAZIONE DELLE PRESTAZIONI SPECIALISTICHE
 Ing. Andrea Rensio

F	Febbraio 2021	Revisione a seguito RdV n.4	TECHNITAL	R. Della Bella	A. Rensio
E	Settembre 2020	Revisione a seguito C.S.	TECHNITAL	R. Della Bella	A. Rensio
D	Novembre 2017	Revisione progetto esecutivo emendato	ETS	M. Cugli	G. Piretti
EM/REV.	DATA	DESCRIZIONE	REDATTO	CONTROLLATO	APPROVATO
PROGETTISTA			Ing. Riccardo Della Bella		
IDENTIFICAZIONE ELABORATO			DATA		
E	T	1	C	M	C
I	G	0	D	T	P
L	0	2	F		
Numero progressivo elaborato: 0452					